

VHCON

PRODUCT BROCHURE
EXPANDABLE CONTAINER HOUSE

拓展箱

Expandable container house



GOOD AND BEAUTIFUL LIFE



可以折叠移动的住宅
A foldable and mobile residence



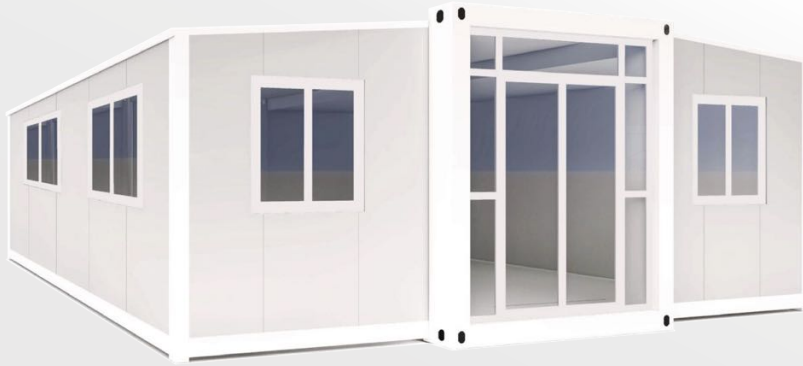
相比于普通集装箱房
Compared to regular container house

面积更大，空间更大 Larger area, larger space	一套完整的住宅 A complete residence
--	---------------------------------

相比于传统建筑
Compared to traditional residence

无需地基 No foundation required	安装极快 Installation is extremely fast
成本极低 Extremely low cost	可以折叠移动 Can be folded and moved

多彩外观 Colorful appearance



White



Black

Customized



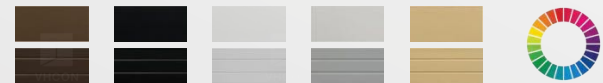
Pink



Yellow



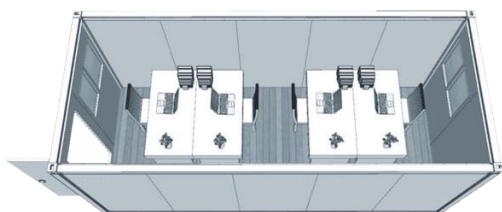
Wood grain



定制颜色以我们的工厂色卡为准
Customized colors are based on our factory color chart

GOOD AND BEAUTIFUL LIFE

更大的面积, 更大的空间 Larger area, lager space



一个普通单箱
A single regular container house



一个拓展箱 E20
A expandable container house E20



● **E20**

Container loading capacity: 2Unit/40HQ

可选20FT/40FT
Optional 20FT/40FT



● **E40**

Container loading capacity: 1Unit/40HQ

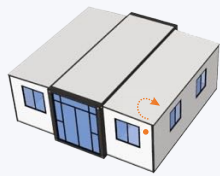
给您一个温馨的家 Give you a cozy home



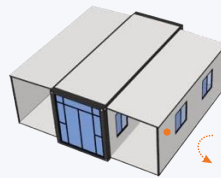
GOOD AND BEAUTIFUL LIFE



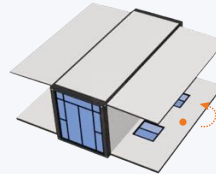
可以折叠移动的家 A home that can be folded and moved



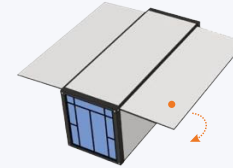
将前后墙板向侧墙折叠
Fold the front and rear wall panels towards the side walls



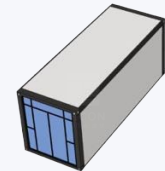
将侧墙板向地板折叠
Fold the side wall panel towards the floor



将地板向上折叠
Fold the floor upwards



将屋顶板向下折叠
Fold down the roof panel



折叠完成
Folding finish



无地基/地形需求，到哪都能用

No foundation/ topography requirements, can be used anywhere



无需打桩，只需要一块平整土地
No need for piling, only a flat piece of land is needed



可在沙滩使用
Can be used on the beach



可在草原使用
Can be used on the grassland



可在山地使用
Can be used on the upland

多种户型方案选择

A variety of house plan options

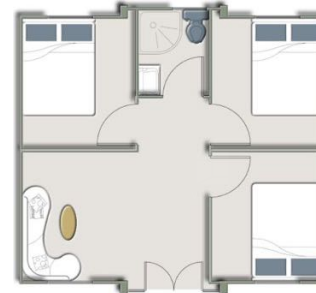
E20 layout plan



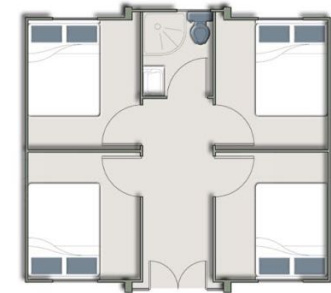
One bedroom



Two bedroom



Three bedroom



Four bedroom

E40 layout plan



Two bedroom



Three bedroom

E20/E40可以灵活分割室内空间，有多种多样的户型方案。联系我们，告诉我们您的设计想法，我们帮您实现。

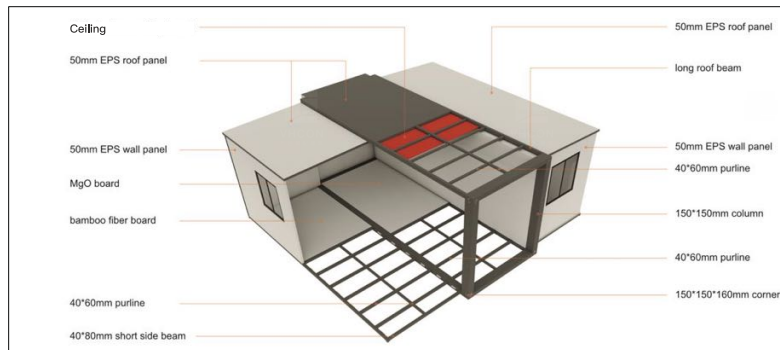
The E20/E40 can flexibly divide indoor spaces and offers a variety of layout options. Contact us, tell us your design ideas, and we will help you implement them.

镀锌钢框架结构

Galvanized steel frame structure

E20/E40均采用镀锌钢材料打造，各零部件之间焊接在一起，整体结构强度偏高，使用寿命可达25年。使用130mm镀锌折叠合页，折叠顺畅耐用。

E20/E40 are both made of galvanized steel material, with each component welded together, resulting in a relatively high overall structural strength and a service life of up to 25 years. Using 130mm galvanized folding hinges, the folding is smooth and durable.



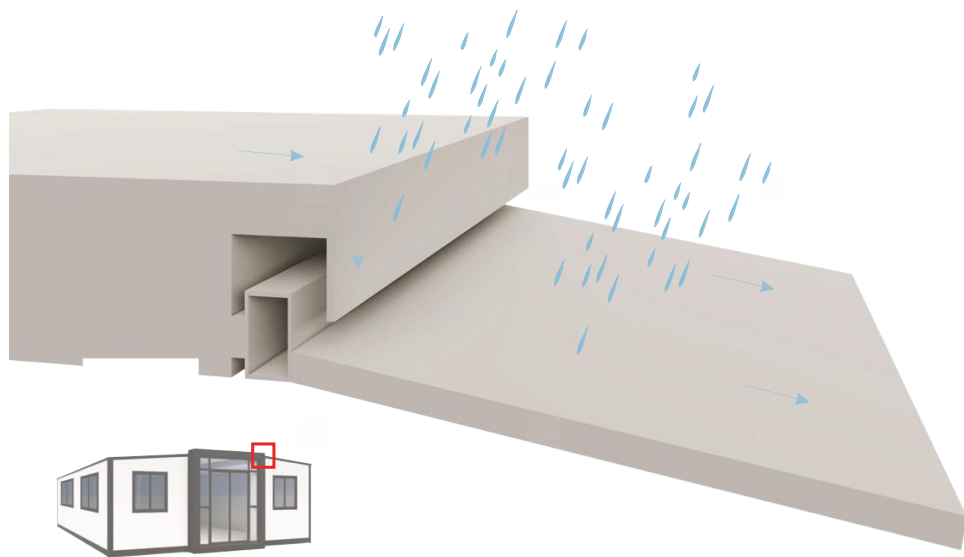
结构爆炸视图
Structural explosion view



结构框架实拍
Real shot of structural framework

折叠状态框架
Folding state framework

折叠合页
Fold hinge



物理结构防水 Structural waterproofing

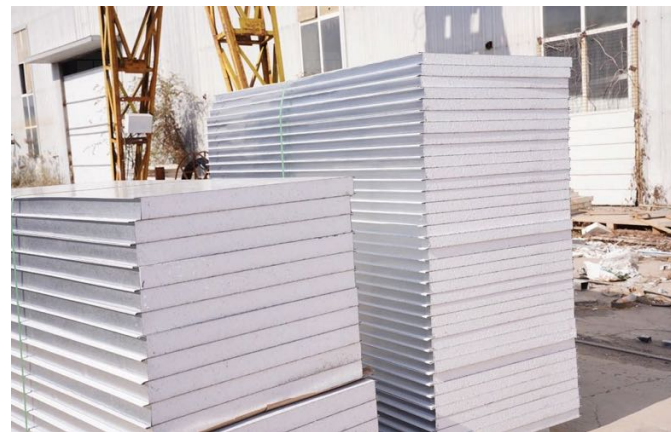
E20/E40 两翼屋顶均内嵌入中间屋顶的收边折口内，使屋顶的雨水可以直接向两翼排水，由两翼排出室外。

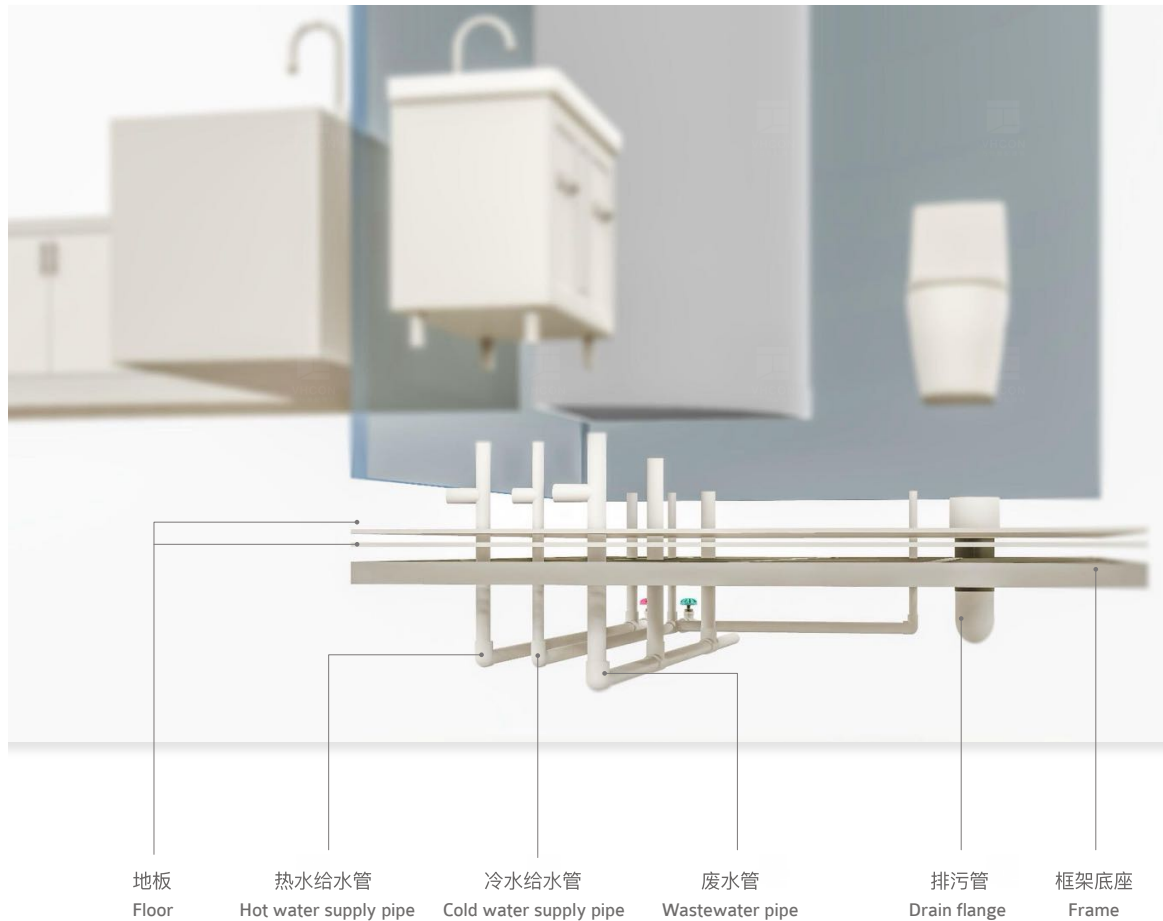
The two wing roofs of E20/E40 are embedded in the edge folding openings of the middle roof, allowing rainwater from the roof to be directly drained to both wings and discharged from the outside.

保温隔热墙板 Thermal insulation wall panel

E20/E40 标准款采用中间采用75mmEPS，两翼50mmEPS夹芯墙板，热导率为0.03~0.04W/(m*K)，具备良好的保温隔热性能。

The E20/E40 standard model adopts 75mm EPS in the middle and 50mm EPS sandwich wall panels on both wings, with a thermal conductivity of 0.03-0.04W/(m * K) and good insulation performance.

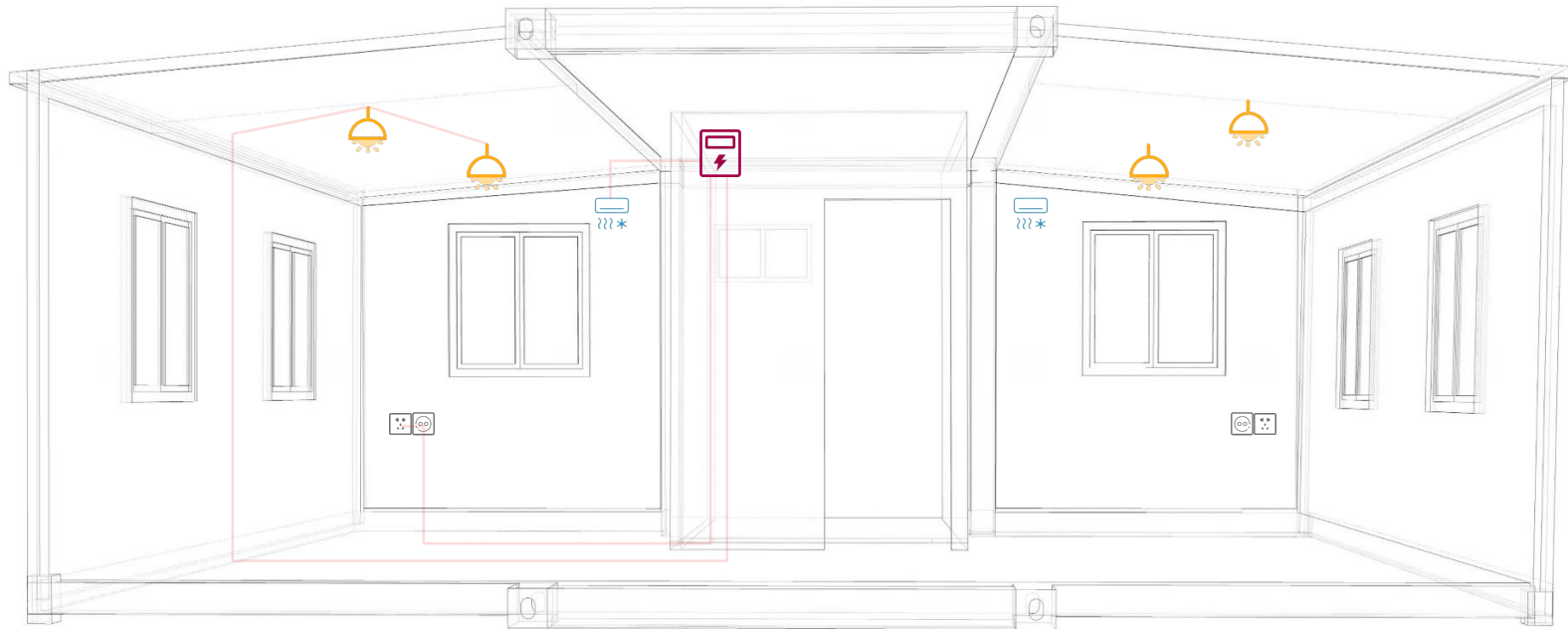




独立管道 Independent water pipe

卫生间使用PVC水管，按照日常用水不同，独立布置污水管及废水管，减少对环境 的污染。

The bathroom uses PVC water pipes, and sewage and wastewater pipes are independently arranged according to different daily water usage to reduce environmental pollution.



家电电路服务 home appliance circuit services

成品拓展箱内置水电线路，所有电路均暗藏于墙地板内，没有裸露电线，给常用家电提供电力供应的同时，保证室内天花完整简洁美观。

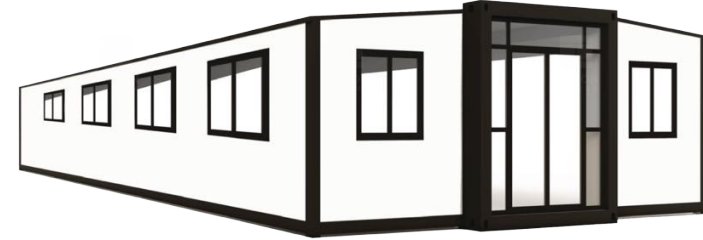
The finished expandable container house is equipped with built-in water and electricity lines, and all circuits are hidden inside the walls and floors without exposed wires, providing power supply for commonly used household appliances while ensuring the integrity, simplicity, and aesthetics of the indoor ceiling.

E 20



Size: **5900L***6320W*2480H(mm)
Container loading capacity: **2Unit/40HQ**

E 40



Size: **11800L***6320W*2480H(mm)
Container loading capacity: **1Unit/40HQ**

横梁 Beam	Q235B镀锌钢 Q235B Galvanized Steel	80*100*2.5D
立柱 Column	镀锌钢 Galvanized Steel	150*150*2.5D
檩条 Purlin	Q235B镀锌钢 Q235B Galvanized Steel	40*60*1.5D
墙板框架 Wall panel frame	镀锌钢 Galvanized Steel	40*80*1.5D 40*60*1.5D
合页 Hinge	镀锌钢 Galvanized Steel	130mm
墙板、屋面 Wall panel, Roof	EPS sandwich wall panel	50mm
中间墙板 Middle wall panel	EPS sandwich wall panel	75mm
地板 Floor	MGO board Bamboo and wood fiber board	
吊顶板 Ceiling	压型扣板 Compression buckle plate	20mm

项目案例 PROJECT CASES



SAMPLE HOUSE GALLERY



GOOD AND BEAUTIFUL LIFE

加购配件-屋顶与门廊 Additional Accessories - Roof & porch



Type A



Type B

MATERIAL OPTIONS

墙板 Wall panel



EPS sandwich panel



Glass wool sandwich panel



PU sandwich panel



Rock wool sandwich panel

地板 Floor



PVC Floor leather



SPC



MGO board

MATERIAL OPTIONS

门 Door

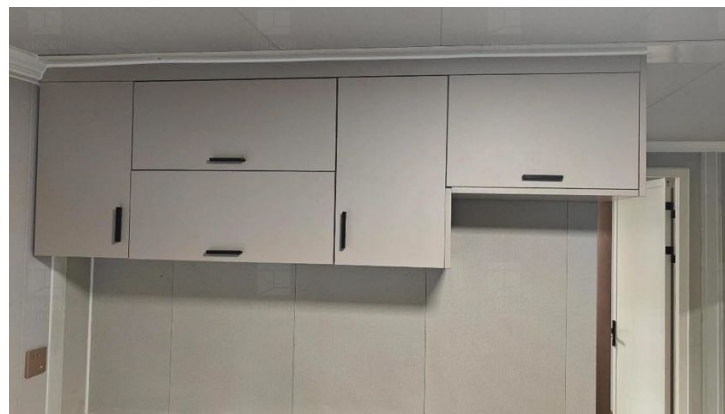


Steel door



Glass sliding door

橱柜 Cupboard



MATERIAL OPTIONS

窗 Window



Aluminum alloy sliding window



Aluminum shutter



Plastic steel window

淋浴房 Shower room



插座 Socket



Australian standard socket

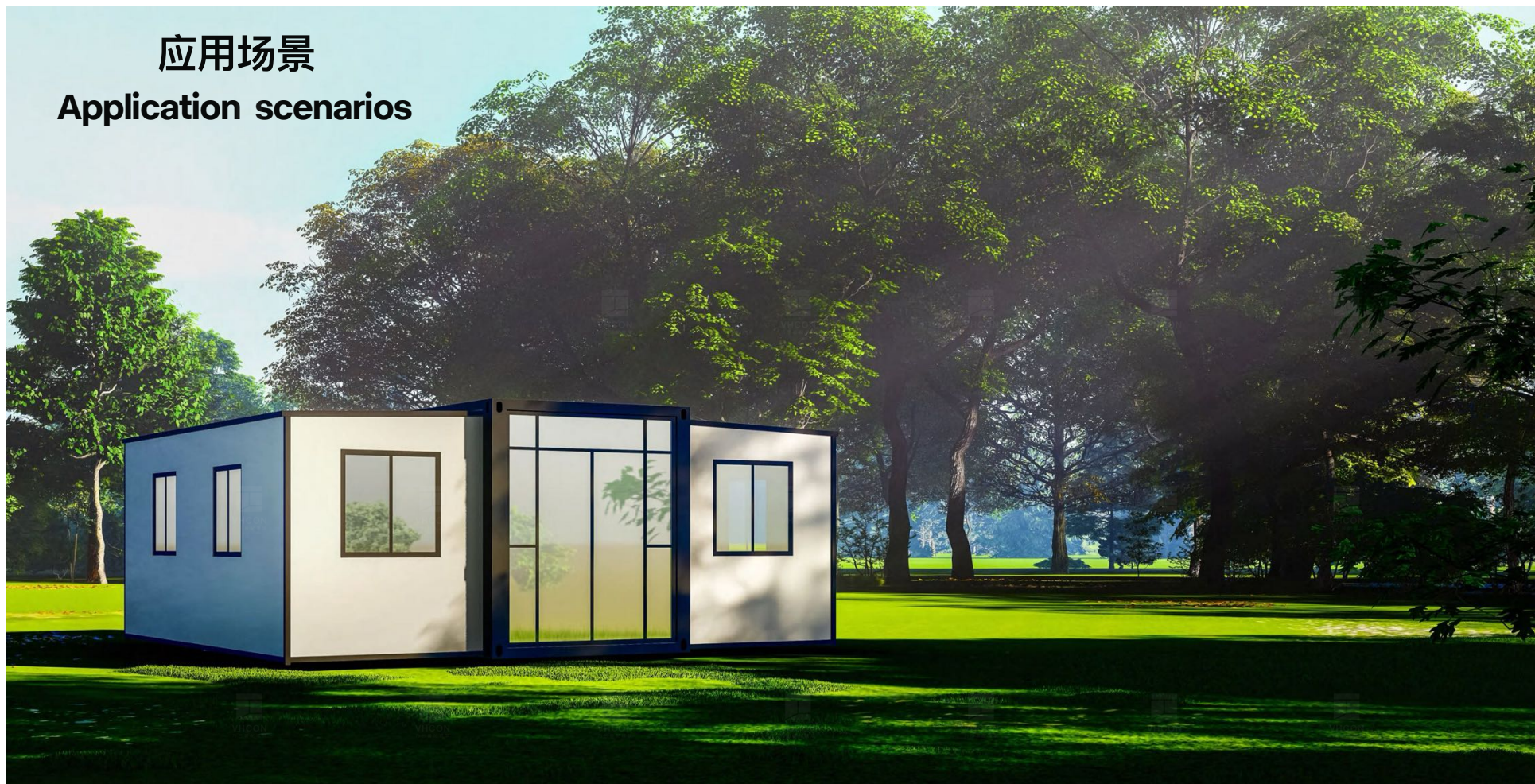


American standard socket



European standard socket

应用场景 Application scenarios



GOOD AND BEAUTIFUL LIFE

● 住宅
Residence

● 办公室
Office

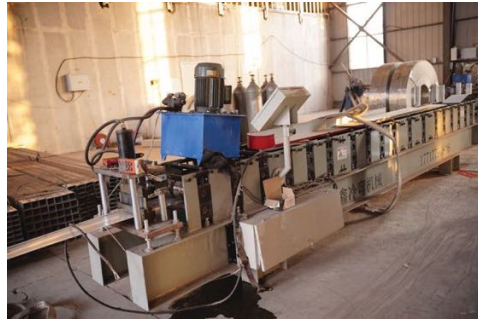
● 商铺
Shops

● 民宿
B&B

● 临时建筑
Temporary
buildings



QA 生产流程 PRODUCTION PROCESS



1 原材料冷弯成型
Cold bending of raw materials



2 焊接零部件
Welding components



3 打磨零部件
Polishing components



4 组装框架
Assembly frame

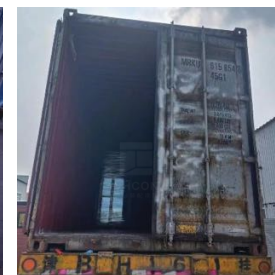
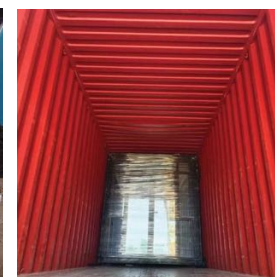
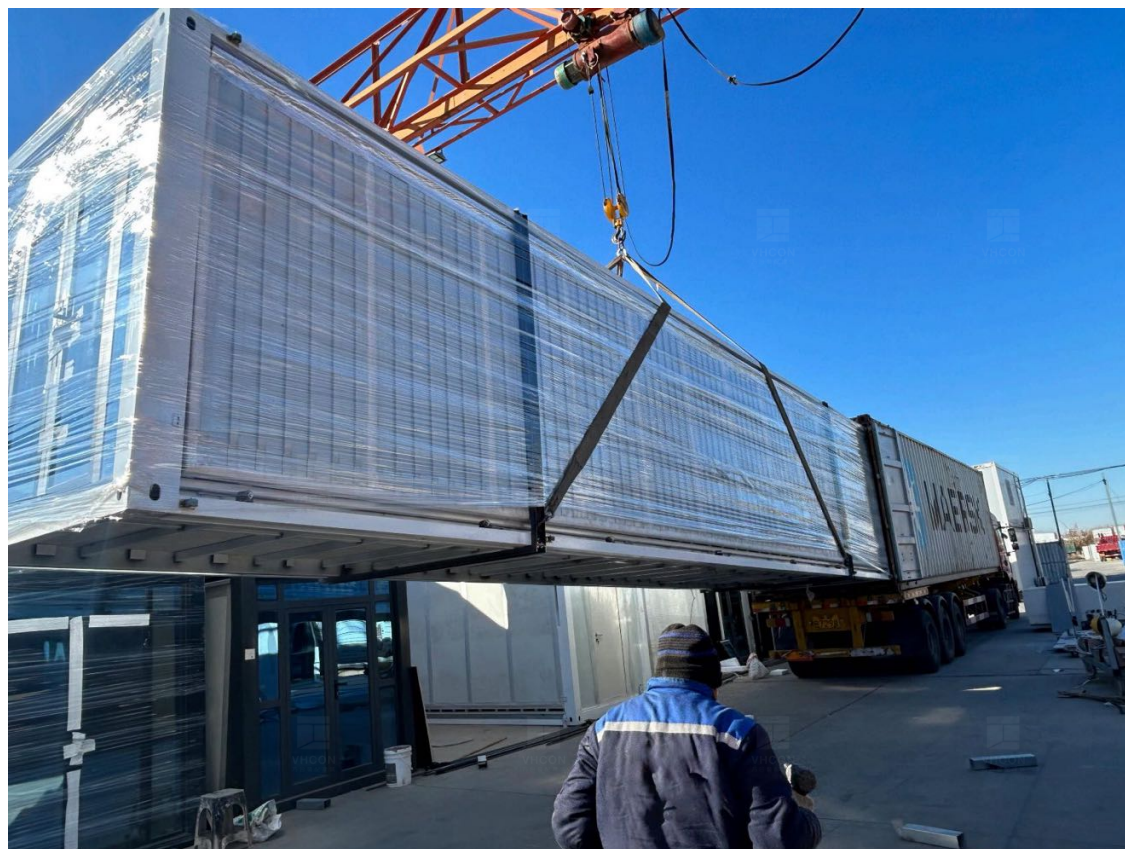


5 框架喷漆烤漆
Frame painting and baking paint



6 生产完成
Production completed

🚚 打包运输 PACKAGING AND TRANSPORTATION



服务流程

Service process



01:我们了解您当地的建筑标准收集您的需求
01:We understand your local building standards & collect your needs



02:我们根据需求制定计划出具设计图纸
02:We develop plans based on requirements and issue design drawings



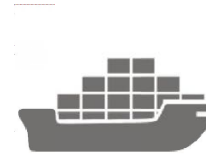
03:我们根据需求及图纸出具报价
03:We provide a quotation based on the requirements and drawings



04:协商一致且合同条款满意后下单
我们根据订单开始生产流程
04:Place an order after reaching a consensus
and satisfying the contract terms We start the
production process based on the order



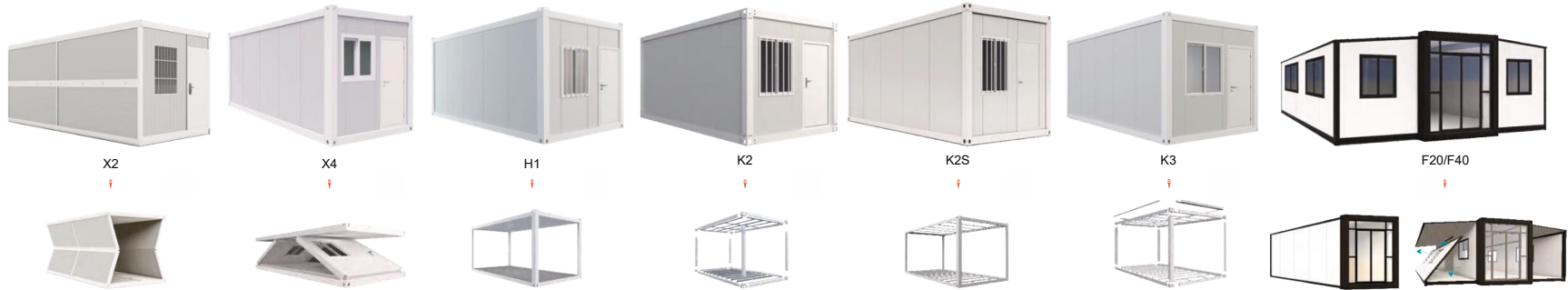
05:产品生产完成后您需要支付尾款
05:After the production of the product is completed,
you need to pay the final payment



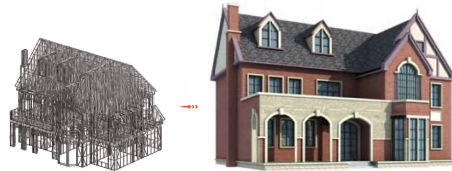
06:我们安排发货并货运至离您
最近的港口码头
06:We will arrange for shipment and shipment to your destination
The nearest port terminal

VHCON PRODUCTS

CONTAINER HOUSE SYSTEM



MOBILE TOILET SYSTEM



LIGHT GAUGE STEEL FRAME BUILDING SYSTEM



ASSEMBLED COMPONENTS SYSTEM



STEEL STRUCTURAL BUILDINGS SYSTEM

CONTACT US
www.vanhecon.com



VHCON



VHCON HOUSE



万 合VHCON



vhconhouse



VHCON